

Unmatched Comfort & Luxury



For Lease

87 Harvest Home Road, Epping VIC 3076

 3  2

\$590 Per Week

For Lease

87 Harvest Home Road, Epping VIC 3076

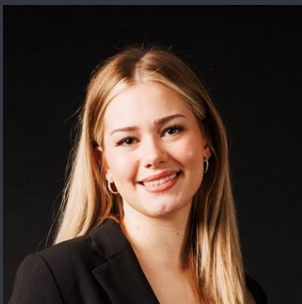
 3  2

Unmatched Comfort & Luxury

Step into a world of elegance and comfort with this exceptional residence, designed to blend luxury with practicality. The open-concept kitchen, dining, and living space is a standout, featuring state-of-the-art 600mm stainless steel appliances, including a dishwasher, sleek Caesarstone countertops, and abundant cabinetry. The master bedroom is a serene retreat, complete with a walk-in wardrobe and a beautifully appointed ensuite showcasing a double shower. Additional highlights include two more bedrooms with built-in robes, a stylish central bathroom, and a spacious laundry with generous storage options.

This home is equipped with a comprehensive array of modern amenities, such as ducted heating, evaporative cooling, stylish floating floorboards, elegant porcelain tiles, a robust security alarm system and a video intercom.

Outside, you'll find a remote-controlled double carport, a low-maintenance courtyard with a garden shed and clothesline, and a timber-decked terrace that's perfec...



Paris Gay

Relationship Manager

03 8804 5888

paris.gay@areal.com.au



Ayda Badri

Relationship Manager

03 8804 5888

ayda.badri@areal.com.au

A/REAL





BOX HILL

Suite 3.4, Level 3, 990 Whitehorse Road, Box Hill. Victoria 3128 | 8686 8388

HAWTHORN EAST

33 Camberwell Road, Hawthorn. Victoria 3123 | 9818 8991

MELBOURNE CBD

Level 7, 99 Queen Street, Melbourne. VIC 3000 | 9818 8991

NORTH

Suites 4 & 5, Level 1, 494 High Street, Lalor. VIC 3075 | 03 9436 0888

POINT COOK

Entrance C4, Level 1, 2 Main Street, Point Cook. VIC 3030 | 8686 8338

SOUTH MORANG

29 Gorge Road, South Morang. VIC 3752 | 8804 5888

info@areal.com.au