

Impeccable Family Comfort & Space In A Quiet Court Setting



For Sale

19 Graham Court, Altona Meadows VIC 3028

 4  2

EOI Closing 22nd June 5pm | \$820,000-\$900,000

For Sale

19 Graham Court, Altona Meadows VIC 3028

 4  2

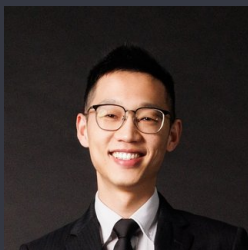
Impeccable Family Comfort & Space In A Quiet Court Setting

Positioned in a quiet court setting, this immaculately presented residence delivers an exceptional family opportunity, with its generous zoned layout and the ease of single-level living.

A warm and welcoming ambience filters throughout inviting interiors with a light-filled living room complementing a spacious lounge/dining area and well-appointed modern kitchen boasting ample storage.

Accommodation is equally impressive, displayed by 3 robed bedrooms, including a master suite featuring a private ensuite and walk-in robe, the versatility of a 4th bedroom/family room and pristine bathroom. Everyday comfort is further enhanced by a large covered patio with café blinds (perfect for year-round entertaining), child/pet friendly rear garden, ducted heating, evaporative AC and double garage.

A peaceful location places this enduring family haven moments from Central Square Shopping Centre, quality schools and childcare facilities, HD Graham Reserve, Bruce Comden Reserve and various transp...



Eddie Zhu

Managing Director - AReal Property Melbourne, Licensed Estate Agent

0452 585 423
03 9818 8991
eddie.zhu@areal.com.au



Vikas Sheoran

Sales Executive, Licensed Estate Agent

0427 150 725
03 9818 8991
vikas.sheoran@areal.com.au

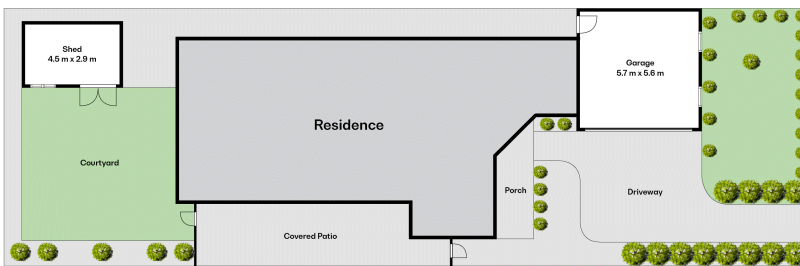
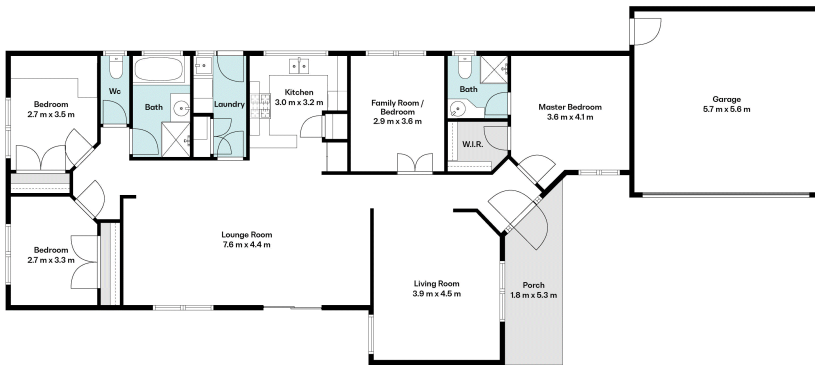
A/REAL







Land Area: 483 m²
(approx.)



BOX HILL

Suite 3.4, Level 3, 990 Whitehorse Road, Box Hill. Victoria 3128 | 8686 8388

HAWTHORN EAST

33 Camberwell Road, Hawthorn. Victoria 3123 | 9818 8991

MELBOURNE CBD

Level 7, 99 Queen Street, Melbourne. VIC 3000 | 9818 8991

NORTH

Suites 4 & 5, Level 1, 494 High Street, Lalor. VIC 3075 | 03 9436 0888

POINT COOK

Entrance C4, Level 1, 2 Main Street, Point Cook. VIC 3030 | 8686 8338

SOUTH MORANG

29 Gorge Road, South Morang. VIC 3752 | 8804 5888

info@areal.com.au

areal.com.au